

State of Wyoming Corner Record

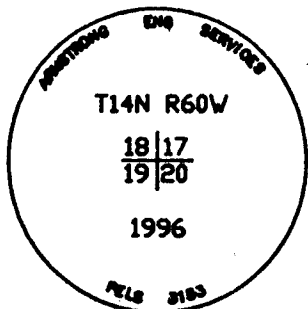
(In compliance with the CORNER RE-ESTABLISHMENT AND FILING ACT, Wyoming Statutes, 1977, Section 36-11-101, et. seq., and the Rules and Regulations of the Board of Registration for Professional Engineers and Professional Land Surveyors.)

Reverse side of this form may be used if more space is needed.

Record of original survey and citation of source of historical information (if corner is lost or obliterated). Description of corner monumentation evidence found and/or monument and accessories established to perpetuate the location of this corner. Sketch of relative location of monument, accessories, and reference points with course and distance to adjacent corner(s) (if determined in this survey). Method and rationale for reestablishment of lost or obliterated corner.

Found no evidence of monumentation at the intersection of county roads 212 and 161. Therefore used road intersection with ties as shown as best available evidence to establish subject section corner.

This filing supersedes land corner recordation on file in Book 1419 Page 0065.



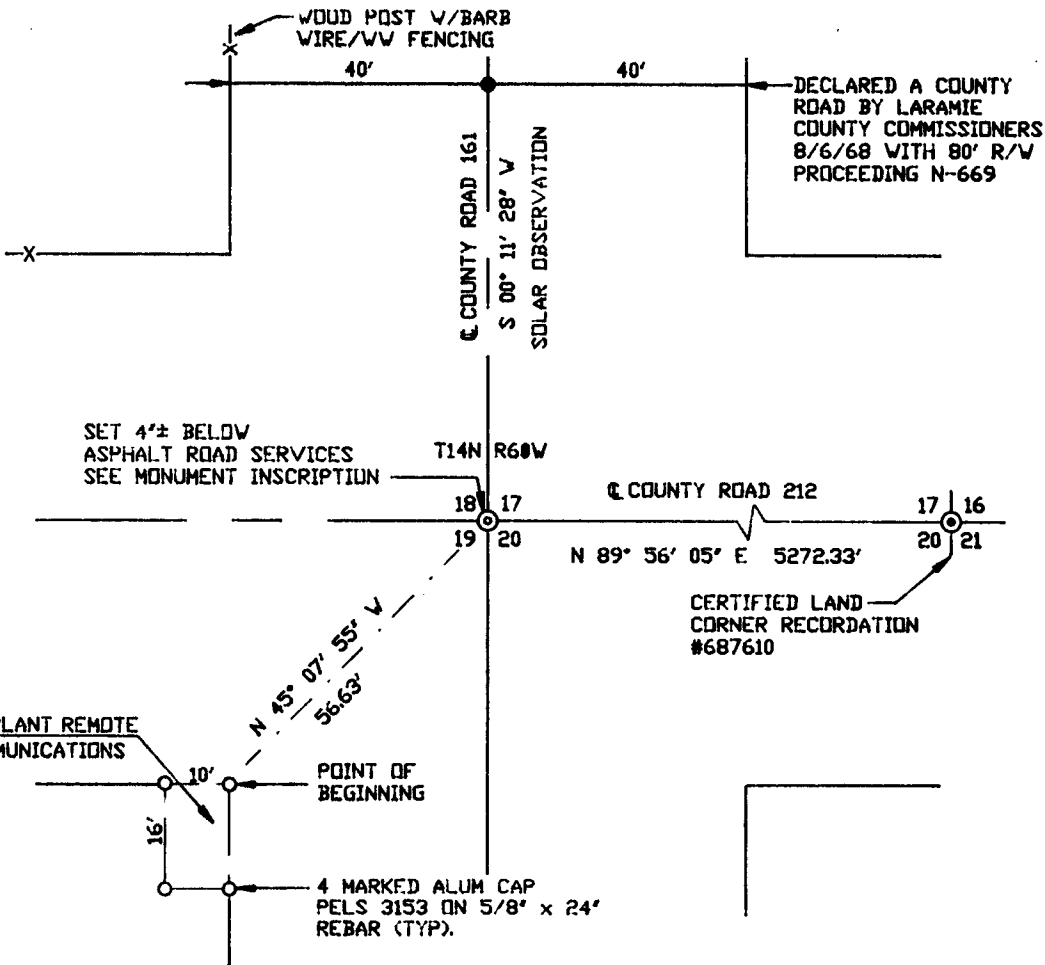
Monument Inscription



LARAMIE COUNTY CLERK
CHEYENNE, WY.

'96 JUN 12 AM 11 36

184656



Date of Field Work: 12/16/95 Office Reference: Field Book #44 page 31

CROSS INDEX DIAGRAM

A	1	2	3	4	5	6	7	8	9	10	11	12	13	14	15	16	17	18	19	20	21	22	23	24	25
B																									
C	6		5		4		3		2		1														
D																									
E																									
F																									
G	7		6		5		4		3		2		1												
H																									
I																									
J																									
K																									
L	16		17		18		19		20		21		22		23		24		25		26		27		
M																									
N																									
O																									
P	19		20		21		22		23		24		25		26		27		28		29		30		
Q																									
R																									
S																									
T	30		29		28		27		26		25		24		23		22		21		20		19		
U																									
V																									
W																									
X	31		32		33		34		35		36		37		38		39		40		41		42		
Y																									
Z																									

Firm, Agency, Address

ARMSTRONG
Armstrong Engineering Services
915 E. Carlson
Cheyenne, Wyoming 82009
(307) 632-2659

This corner record was prepared by me or under my direction and supervision.

SEAL & SIGNATURES



Corner Name: Section Corner Section: 18|17 19|20 T. 14N R. 60W 6th P.M. Cross Index No.: N-5
SDRPE/PLS/March 1994 (CICR, SJA)